

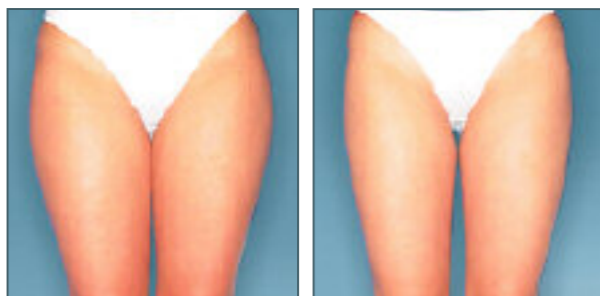


## EFFICACY OF CELLU M6® KEYMODULE *i* IN THE TREATMENT OF CELLULITE

by Pr. J.P. ORTONNE  
Chief of the Dermatology Department  
Hospital L'ARCHET II, Nice / France

A clinical study conducted by the department headed by Pr Ortonne in CHU Nice, has demonstrated objectively the efficacy of Cellu M6 Keymodule *i* on a group of 30 women, average age 30 years old, with cellulite on their thighs of a BMI varying between 22 and 30. The most effective evaluation techniques were used before and after 16 treatment sessions: perimeter measurements with digital references, thickness of cutaneous fold, ultrasound 20MHz, cutaneous prints and macrophotography which allowed the exploration of the micro-relief and of the cutaneous microcirculation. All the measurements were taken in the 1<sup>st</sup> phase of the menstrual cycle of the women.

### PRELIMINARY CLINICAL STUDY WITH CELLU M6® KEYMODULE *i*



Session 0

Session 16

After 16 sessions, 93% of the subjects showed a decrease in the perimeter measurement of their thighs, of up to 3,5 cm (average 1cm); 100% of the subjects experienced a reduction in their cutaneous fold of up to 1,7 cm (average 0.8 cm). Linearisation of the initial curve (due to fat herniation into derma) is also observed between derma and hypo-derma.

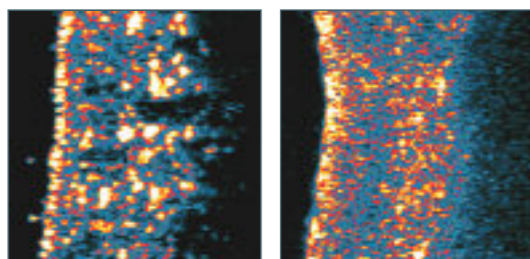
The improvement in the cutaneous micro-relief is demonstrated by a remarkable smoothing of the skin, which is soft to the touch. The characteristic deep aspect of the cellulite is notably corrected and visible on the cutaneous prints

89 % of the study subjects experienced a prolonged feeling of well being after each session; 96% of them found the treatment to be very relaxing while 86% declared that they were extremely satisfied with the effectiveness of the treatment on their cellulite.

#### *"Sublimation of the skin, body and mind"*

This is the latest opinion of the patients who experienced a preview test of the Cellu M6 Keymodule *i*.

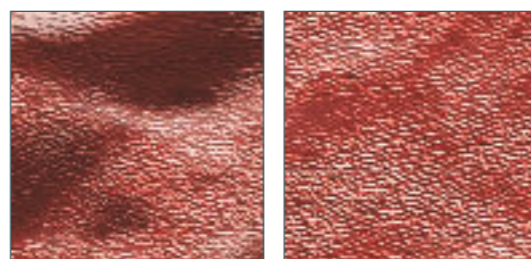
Dermo-hypodermic Junction  
(20 MHz Echography)



Session 0

Session 16

Cutaneous Prints



Session 0

Session 16



MLD... These three letters link physiotherapists with soft tissues. Widening their areas of expertise, bringing more freedom and the arrival of new patients, lymphatic drainage has opened up plenty of opportunities for them. An in-depth look at a safe and effective technique.

# MANUAL LYMPHATIC DRAINAGE FROM MEDECINE TO BEAUTY

Relatively uncommon among physiotherapy techniques, lymphatic drainage enjoys true scientific backing.